

# Installation Guide (PLT-418C)

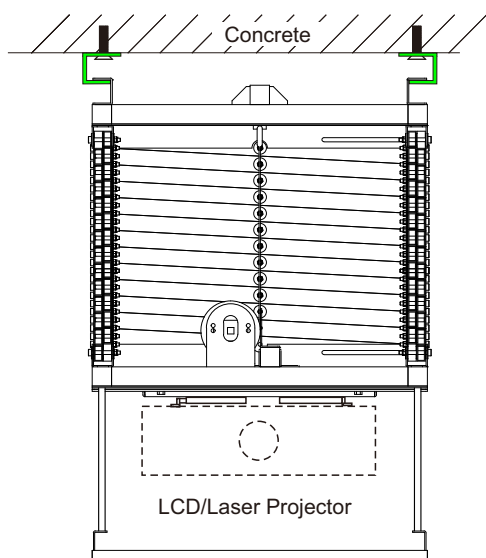
PLT

## Warning

Take pre-caution when handling main supply and live wires. Install with qualified technician or trained personnel.

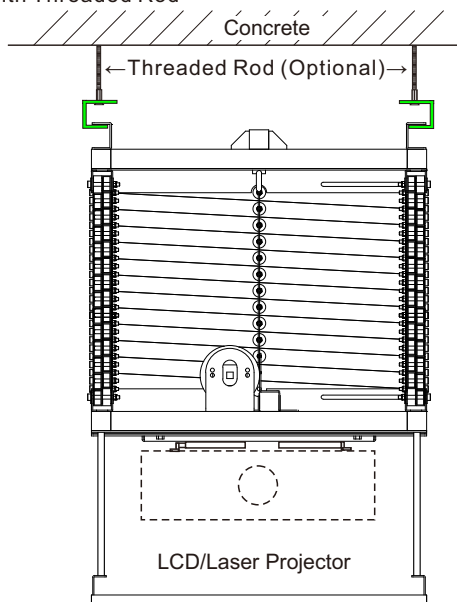
### Types of Installation Mounts

#### Mount Directly To Concrete Ceiling

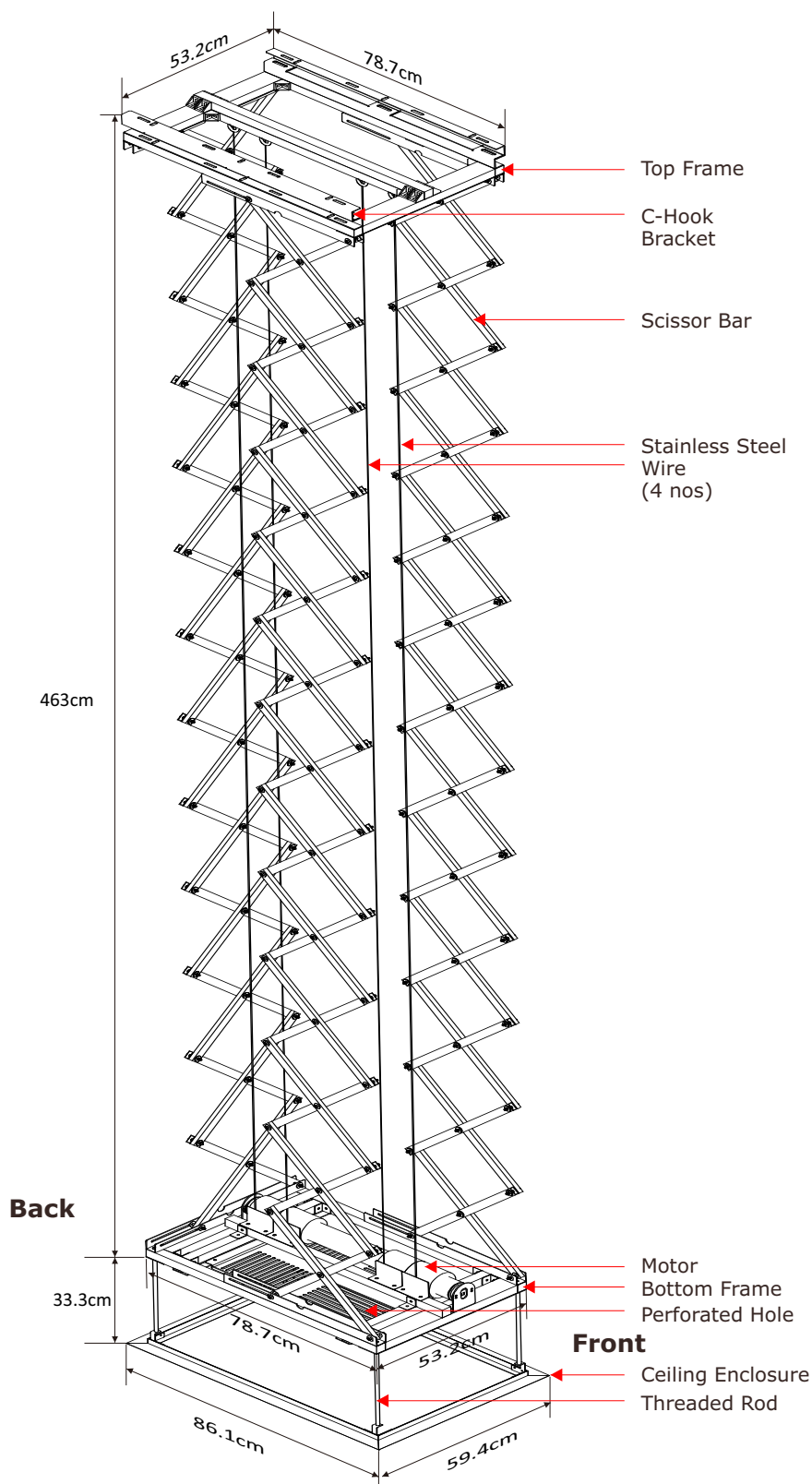


Front View

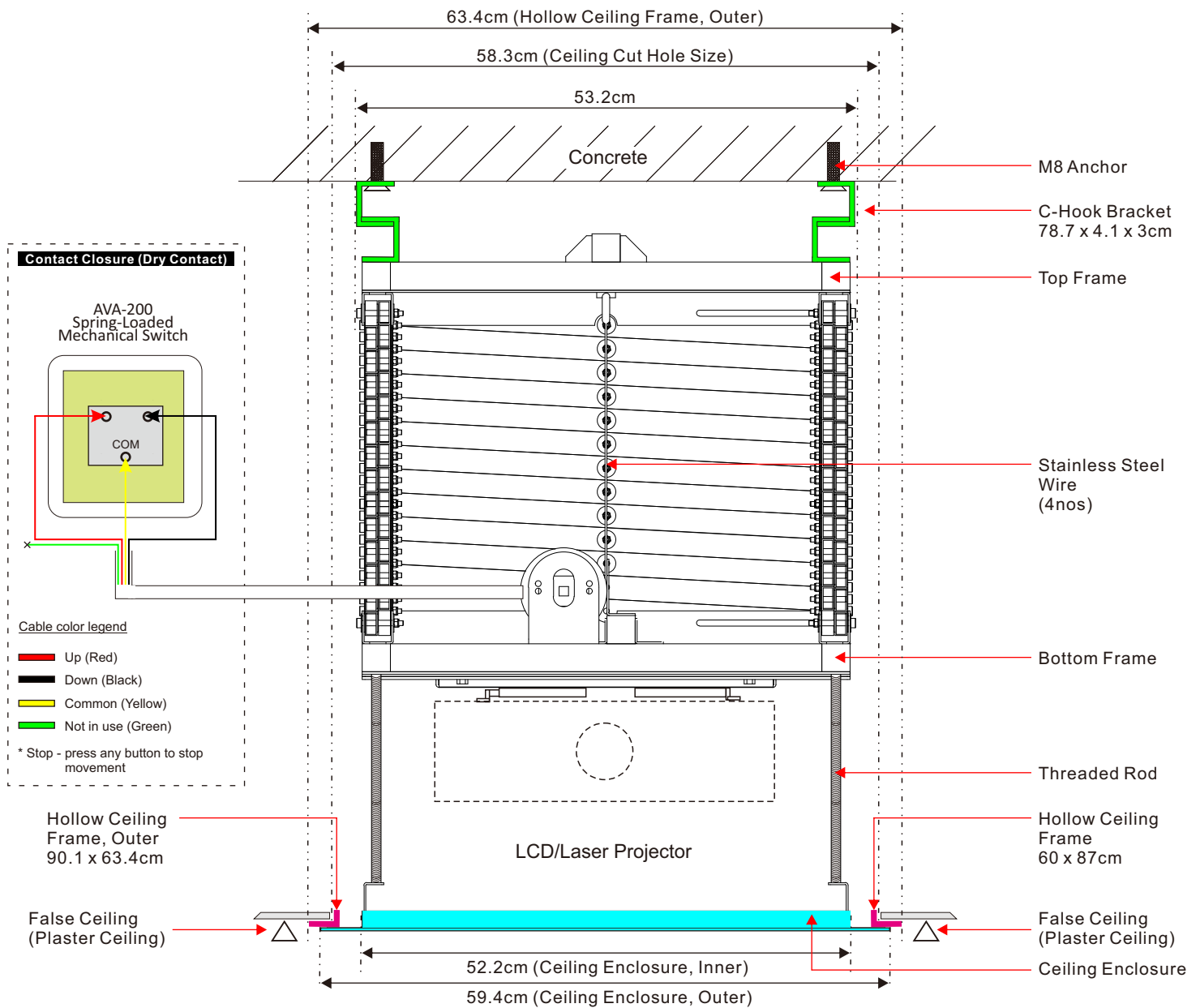
#### Suspended From Concrete Ceiling with Threaded Rod



Front View

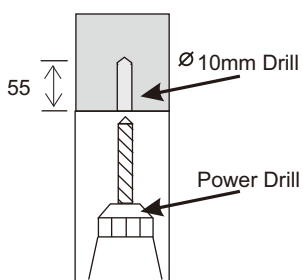


Model	Kept Position Height	Maximum Travel Distance	Load Capacity
PLT-418C	86.3cm *Depending on the lift drop height	410cm	70kg



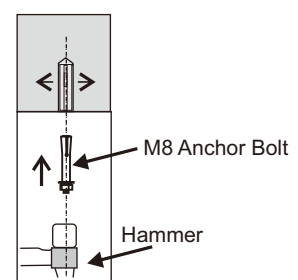
## Steps for Installation

### Step 1



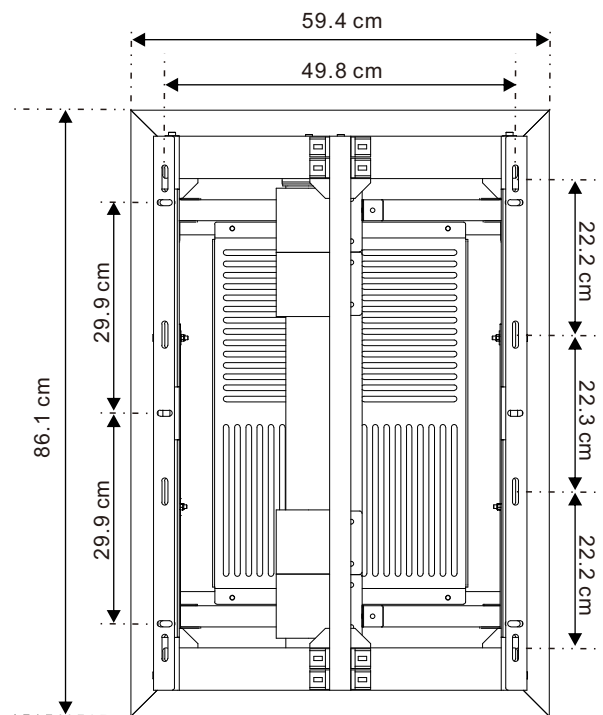
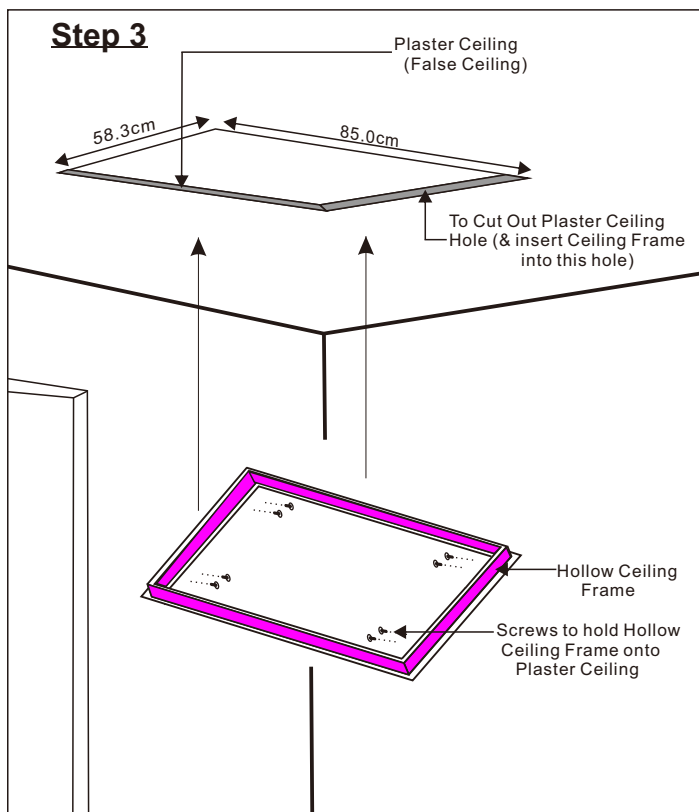
Drill Dia. 10mm holes to a depth of 55mm..  
(Note: Do not drill too deep)

### Step 2



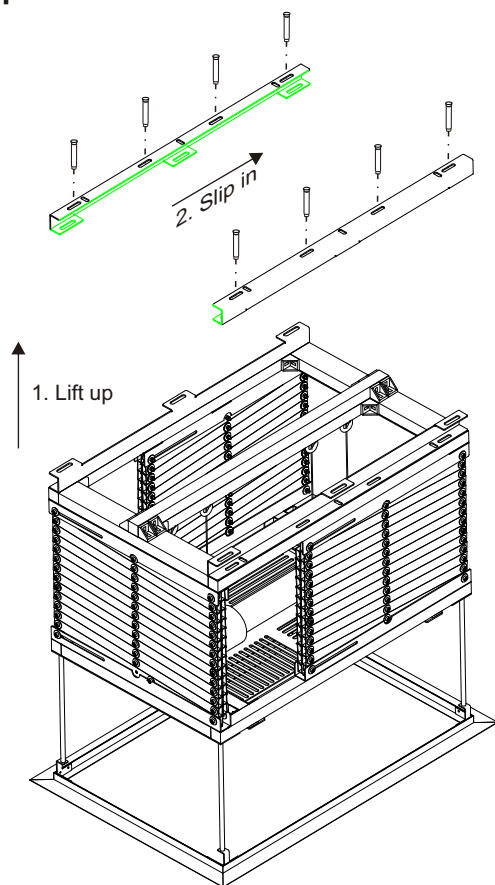
Insert M8 anchor into the hole.  
Use pin punch to expand the anchor.

### Step 3

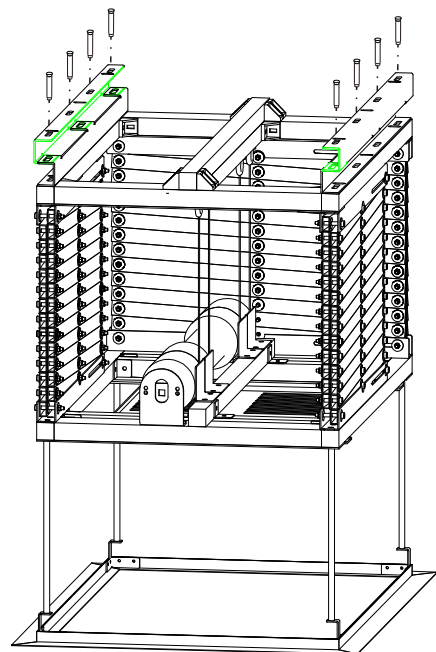


To cut out plaster ceiling hole to the size of the hollow frame so that it can be mounted securely.

### Step 4



### Step 5



### Step 6: RF Remote Operation



Up

Move Upward



Stop

Stop Movement



Down

Move Downward



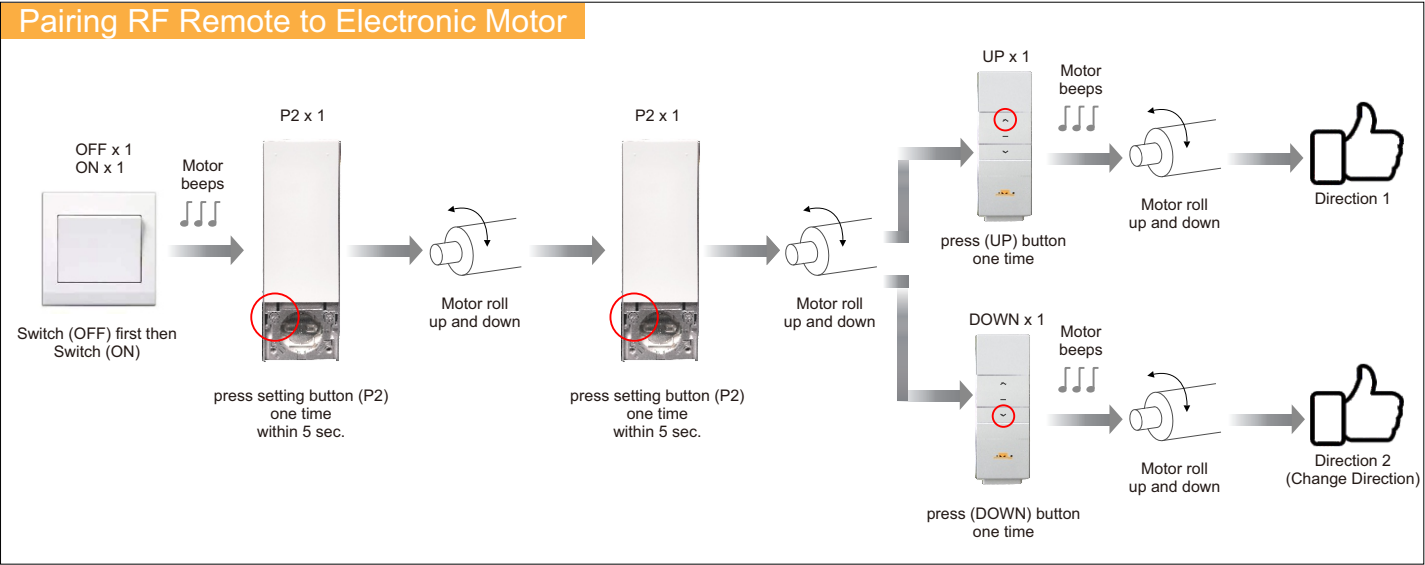
Stop for 2 sec.

Move to third limit  
(for maintenance purposes)  
Press and hold (STOP) for 2 sec.

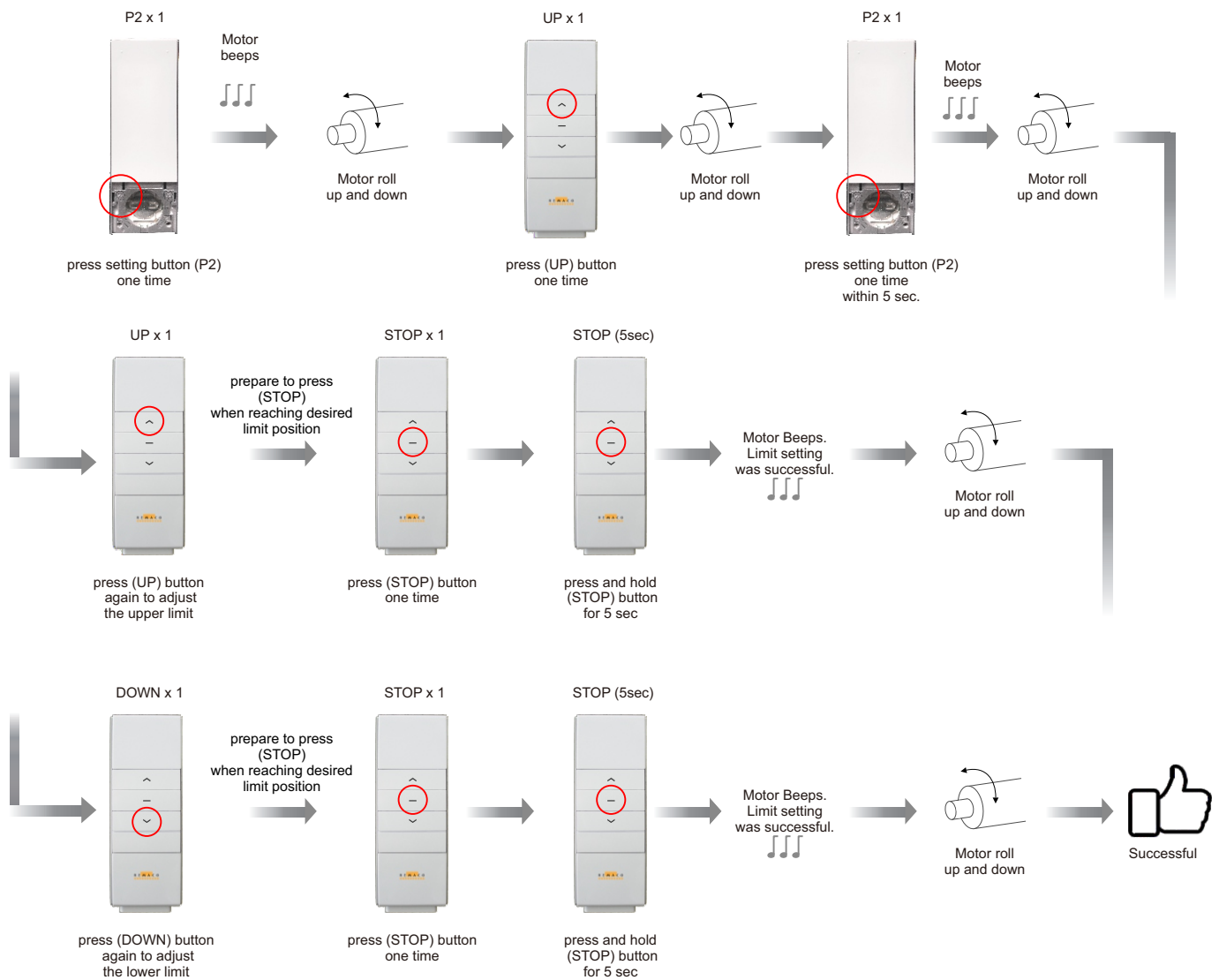
**Step 7: Mechanical Switch (AVA-200, AVA-200+, Third-Party Control)**



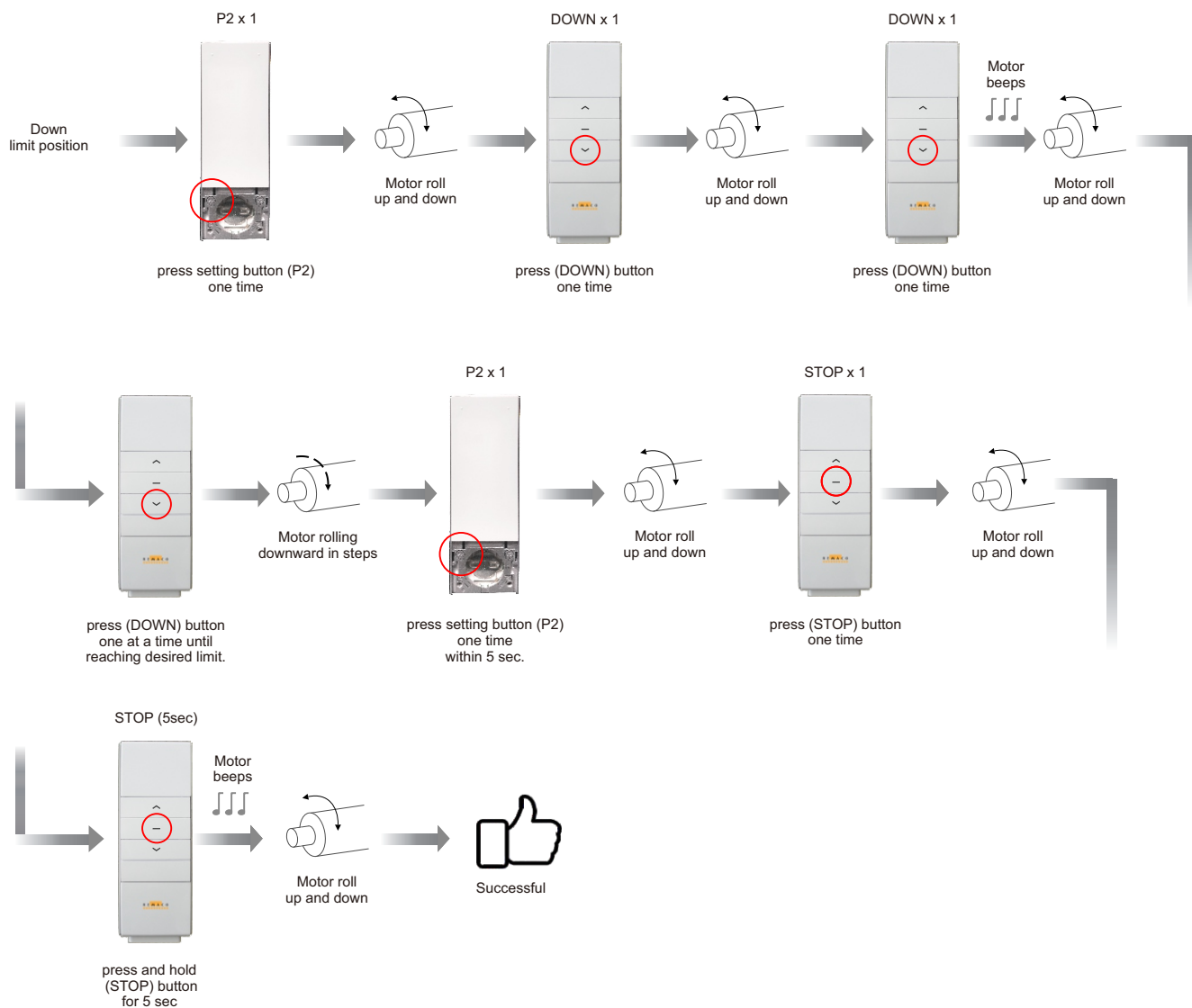
**Step 8: Pairing, Limit Position Settings, and Deleting**



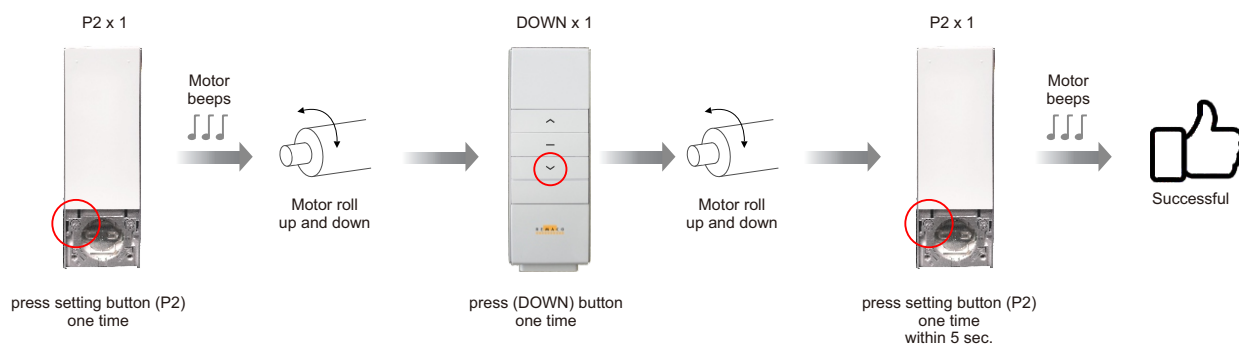
## Setting of Upper and Lower Limit



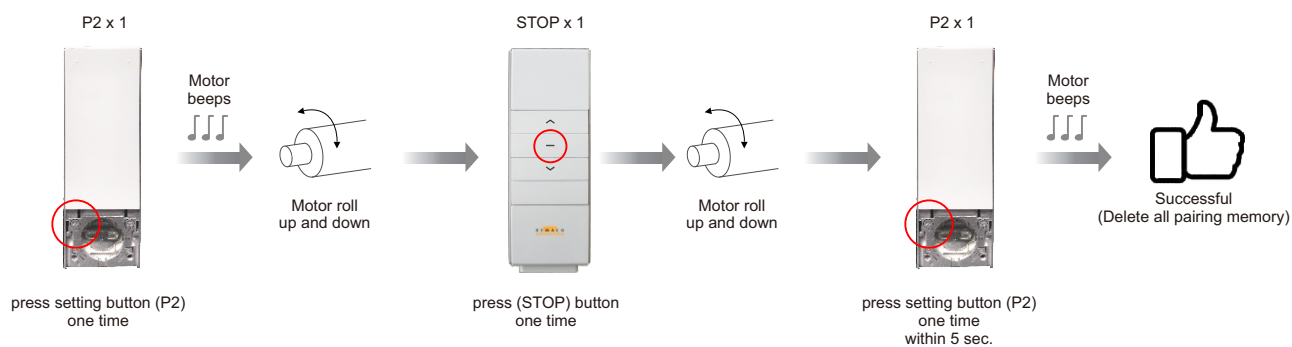
## Setting of Third Limit (Below Lower Limit for Maintenance)



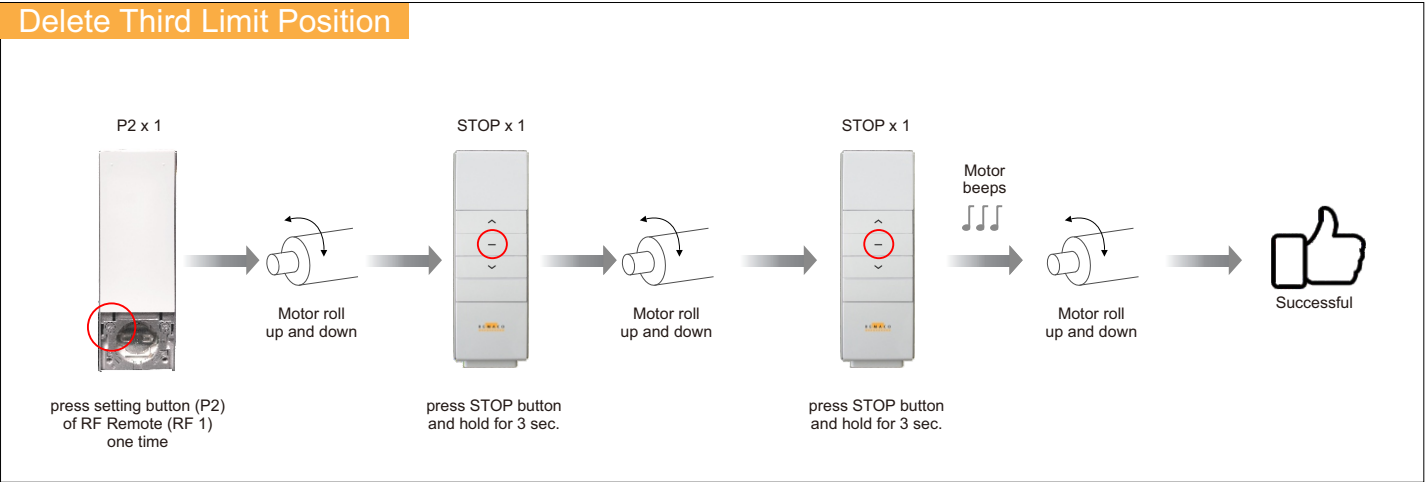
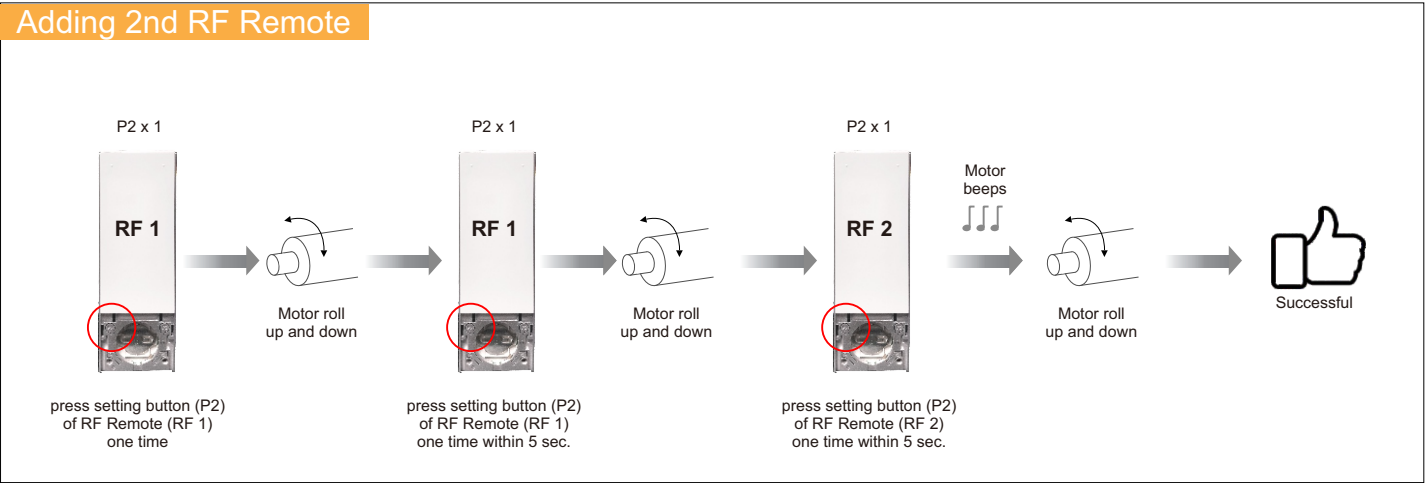
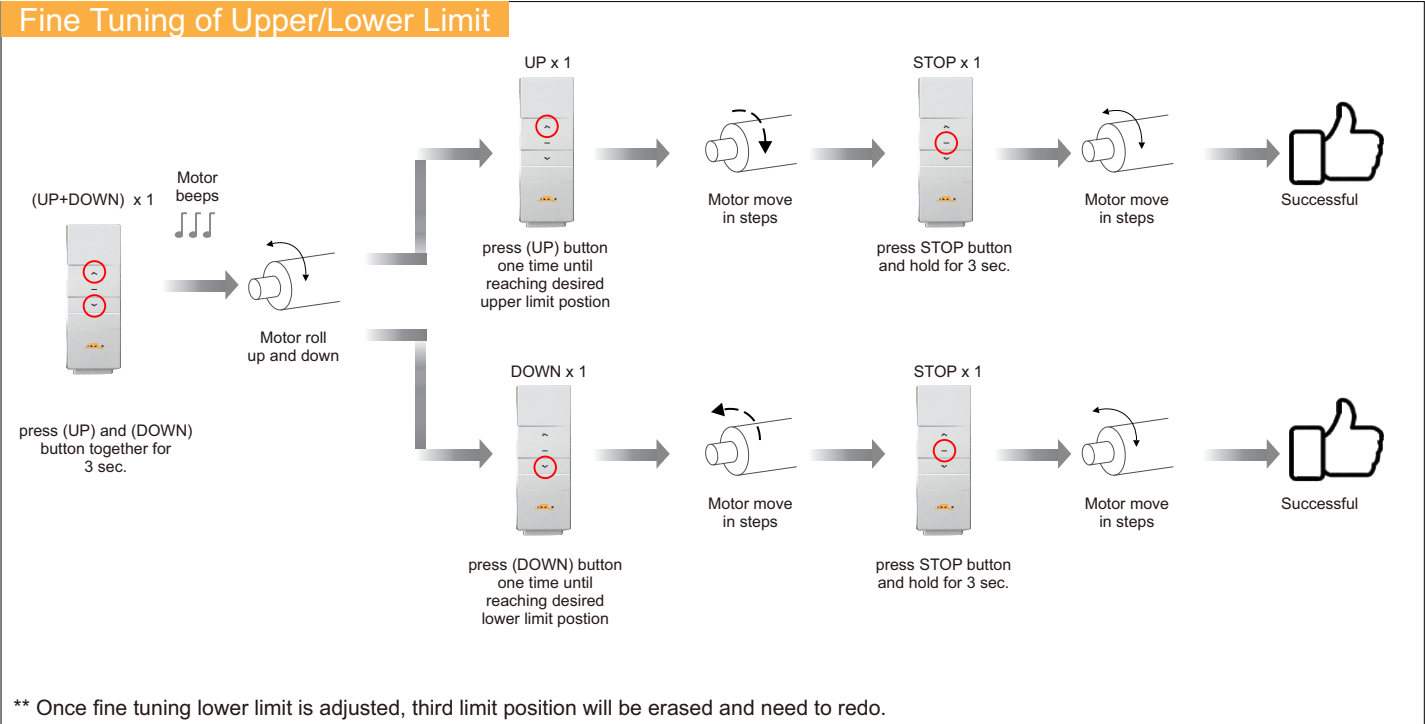
## Delete the Limits



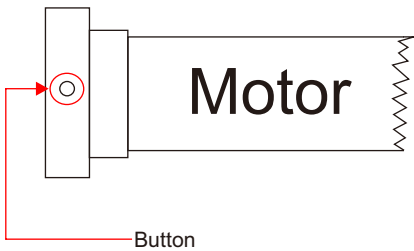
## Delete Memory of RF Remote Pairing



Appendix A (Set Only When Required)



Appendix B (Another Setting method by Motor Button)



Change Direction

Press and Hold Button for 5 sec.

Motor beeps x 3

Motor roll up and down

Successful

Factory Default Reset

Press and Hold Button for 10 sec. (Do not release)

Motor beeps x 3

Motor roll up and down

5sec.

Motor beeps x 3

Motor roll up and down

Motor roll up and down

Next 5sec.

Successful

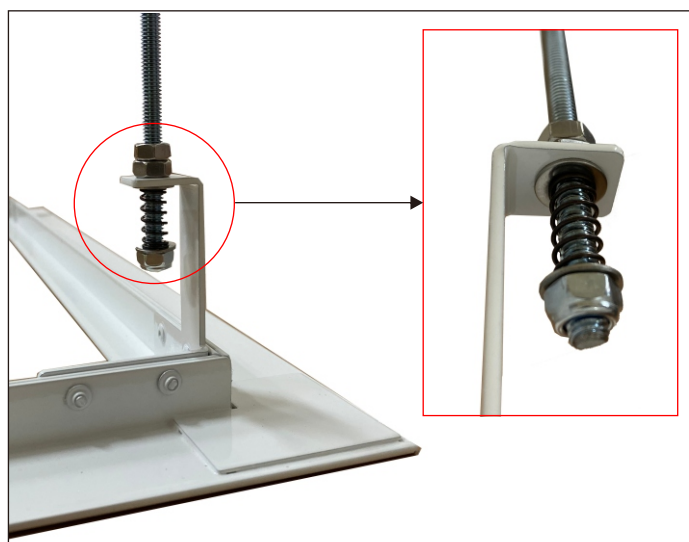
## Appendix C (Assemble threaded rod and spring to ceiling enclosure)



Parts:

1. Ceiling Enclosure
2. 4nos. x Threaded Rod & Spring
3. Springs, Nuts and Washers

Insert threaded rod and spring as shown and tighten with nuts and washers.



Fully assembled ceiling enclosure.

**End**