

Installation Guide (For BKT-568)

V: 1.0

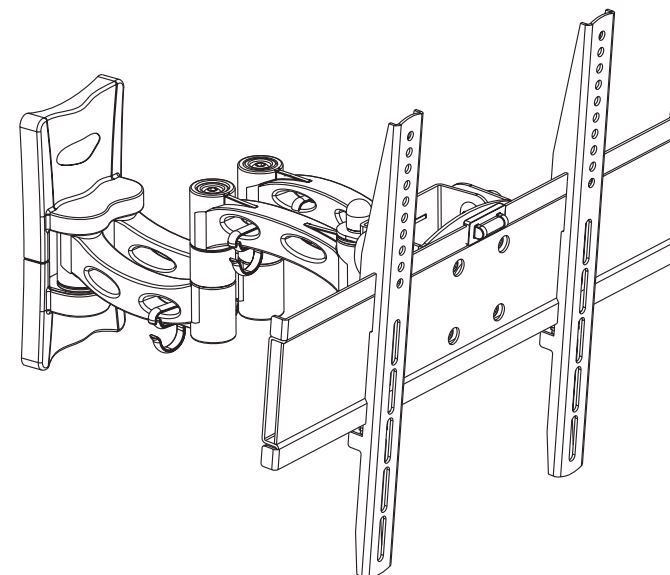
BKT-568

Important Notes:

All Plasma / LCD TV brackets are thoroughly inspected and fully tested operational in factory.
We accept no liability whatsoever for any losses due to improper operation, or any unauthorized alternation.
All trademarks contained in this installation guide are the property of their respective owners.

LCD/Plasma Screen Bracket

Model.:BKT-568



- TV Size Range: 10"-52"
- Universal VESA mount
- Max load capacity:25Kg
- Adjustable Tilt:0° -15°

Step6: Adjusting the display

This mount provides a wealth of display adjustment to offer the best viewing from a number of seating positions. See Fig. 6.

Vertical Tilt Adjustment Angle

Vertical adjustment angle is -5° to 15° . Choose the desired vertical angle and turn clockwise the Adjustable bolt on the back of the Tilting Mount Plate.

Left to Right Pan Adjustment Angle

The display can pan $\pm 90^{\circ}$ from left to right. Choose the desired position and use provided Wrench to tighten the front bolt on the top of the Arm Assembly.

Left to Right Swivel Adjustment Angle

The display can swivel $\pm 60^{\circ}$ from left to right. Choose the desired position and use provided Wrench to tighten the back bolt on the top of the Arm Assembly.

Stowing the Display -Positions the display against the wall

Grasp the side edges of the display, swivel and pull the display into the center position, and then push the display straight back towards the wall into the stowed position.

Note: Use care when stowing the display to ensure that cables do not become pinched.

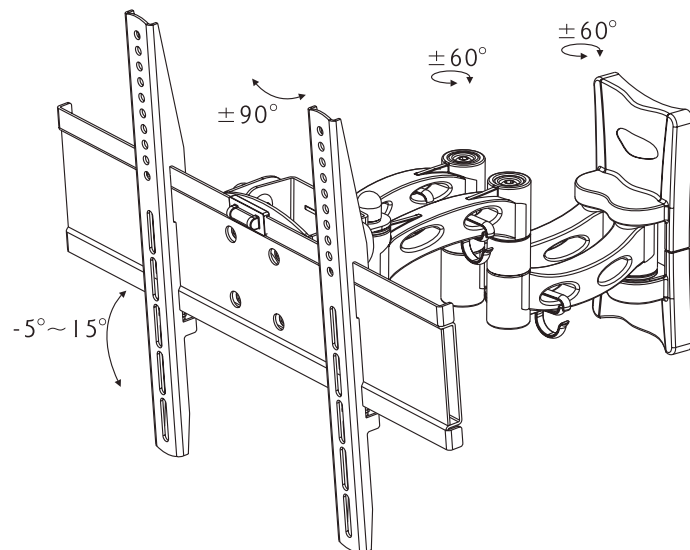
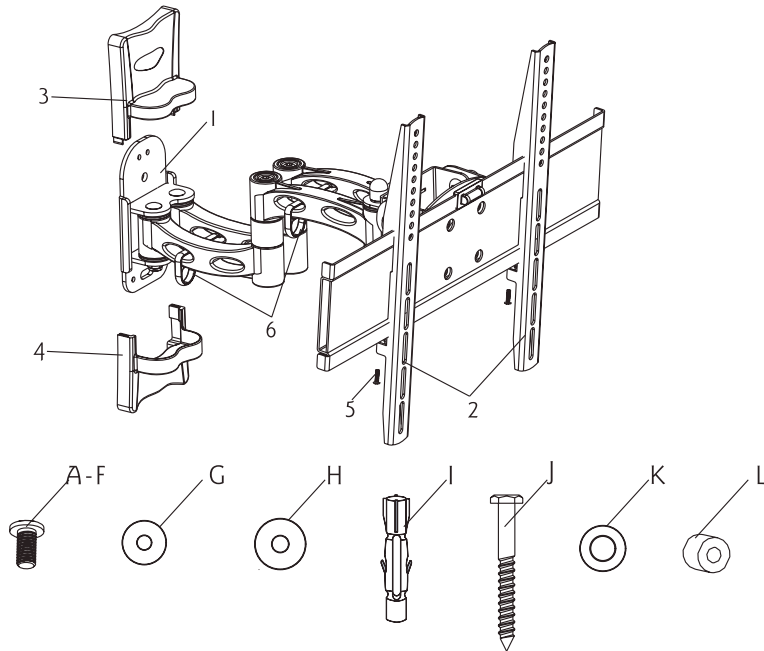


Fig. 6

Contents of the ox: Hardware shown as actual size

Make sure that none of these parts are missing before beginning installation. If there are parts missing stop the installation and contact us.



ID	Qty	Description
1	1	Arm Assembly
2	2	Bracket
3	1	Up Plastic Cover
4	1	Down Plastic Cover
5	2	Safe bolt
6	4	Cable management clip
A	4	M4×12mm bolt
B	4	M5×12mm bolt
C	4	M6×12mm bolt

ID	Qty	Description
D	4	M4×25mm bolt
E	4	M5×25mm bolt
F	4	M6×25mm bolt
G	4	M5 washer
H	4	M6 washer
I	2	Wall anchor
J	2	Long bolt
K	2	Long bolt washer
L	4	9/16" Spacer

Step 5:Using Cable Management

This mount includes a cable management feature, where cables can be routed along length of the Arm Assembly. Route the signal cables and power cable along the Cable management clip as shown in Fig.5. Be sure to leave enough slack for all cables. With all cables in place, swivel the display at each pivot and check that the Arm Assembly moves freely, without stretching or damaging the cables.

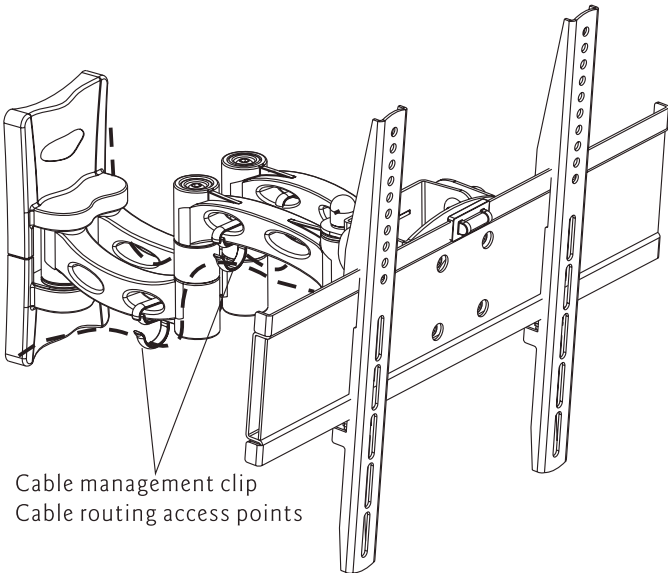


Fig. 5

Step 4: Hanging display

Firstly lift the bracket mounted display over the mount. And then hook the brackets over the top of the mount. Rotate the display let the bottom of the brackets hook over the bottom of mount, as shown in Fig. 4a. Then put safe bolts into the bottom of the brackets and lock it, as shown in Fig. 4b.

Warning: Some TV require two people to lift, as we are not responsible for any personal injury or product damage due to mishandling.

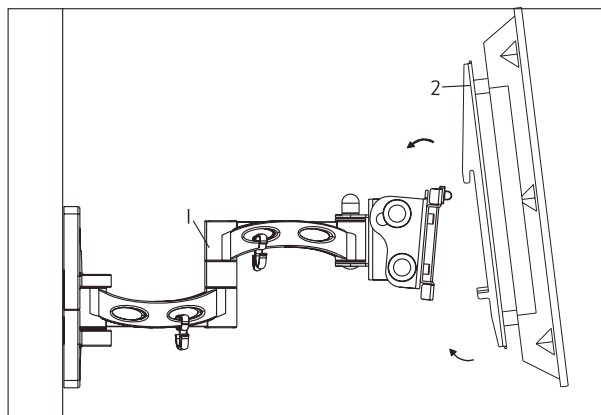


Fig 4a

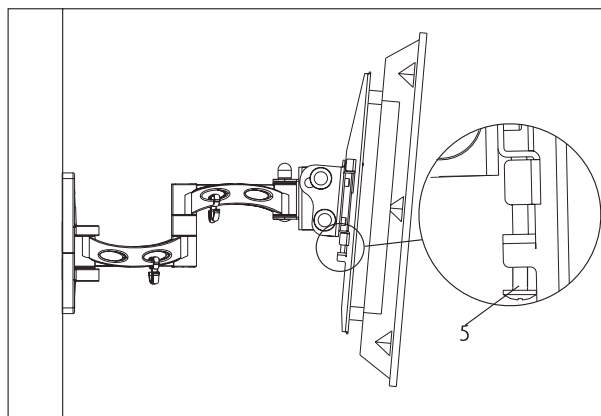


Fig 4b



We are not responsible for any personal injury or product damage due to mishandling, incorrect mounting, incorrect assembly or incorrect use of this product.

Note: The supplied wall mounting hardware is not for use on steel stud walls or cold cinder block walls. If you are uncertain about the nature of your wall, please consult a qualified contractor. If the hardware you required is not included please contact your local hardware store.

Caution: This Product LCD /Plasma Wall Mount Bracket is intended for use only with the maximum weights indicated .See apparatus instructions .Use with products heavier than the maximum weights indicated may result in instability causing possible injury .

Step 1: Attach bracket to TV

Check your TV manual to confirm the diameter of bolt to be used or choose an appropriate bolt according to size, height and position of the holes on your TV. See pages 4-5 of these instructions for examples.

For correct installing, make sure that hook of every bracket must facing down. Use selected bolts, spacers and washers for installing bracket at the back of display. Adjust two brackets to equal heights and level. Once aligned, tightly secure the bolts.

IMPORTANT: Don't force the bolt into the hole, which will cause a damage of equipments and injure of person. Don't use electric drill to fasten any bolts.

Following examples shows how to use bolts, spacers and square washers.

1. Some displays have vertical backs. No spacer is required. Install the bracket directly to the back of display by using bolts and washers provided. As shown in Fig. 1a.

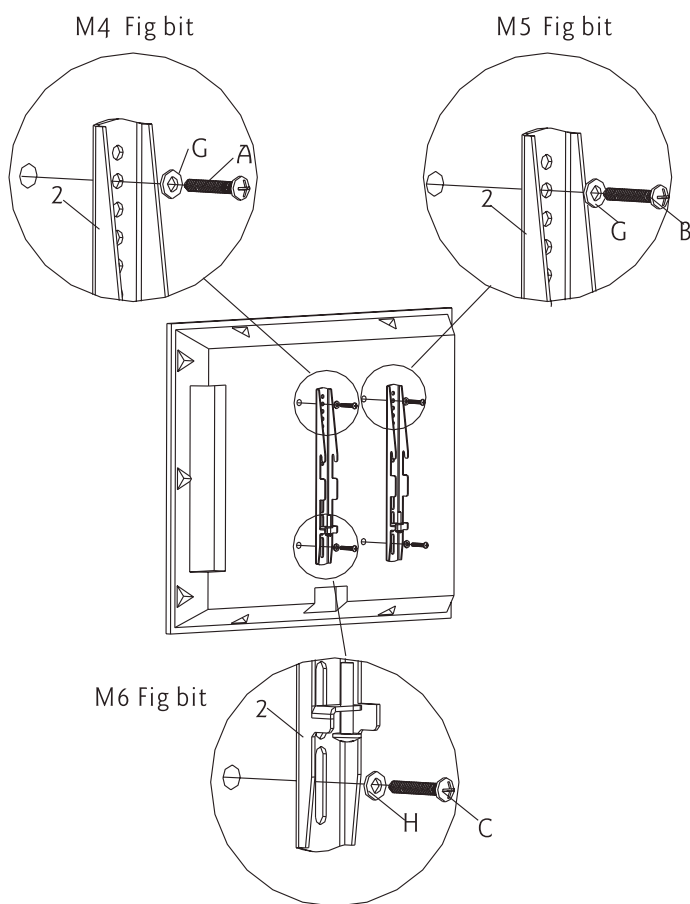


Fig 1a

Step 3: Installing the Plastic Cover

Secure the separated Plastic Cover over the Wall Plate by pushing them the method as follow: First move the Up Plastic Cover the Wall Plate ,then put the Down Plastic Cover in uprightiness dirt. See Fig. 3.

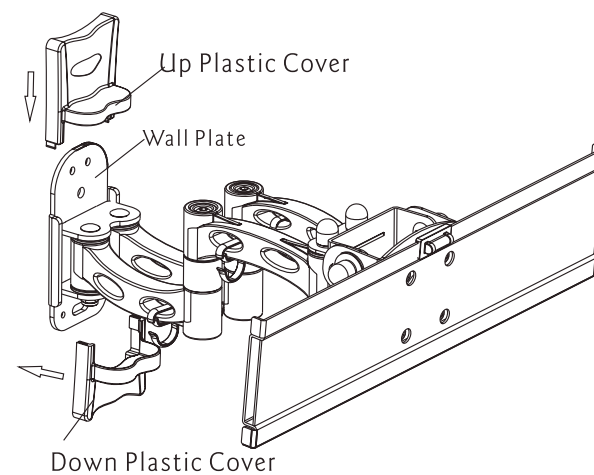


Fig. 3

Brick, Concrete and Stone wall:

Using a awl or nail to make where the nails are located. Pre-drill these holes with a 10mm drill bit to at least 80mm in deep hole. Use wall mount as a template to mark the location of other hole and drill the same holes. Please make sure these holes are level and eudipleural. Insert wall anchors(I) into each of these holes. Attach the wall mount to the wall using 2 long bolts(J) and washers(K).

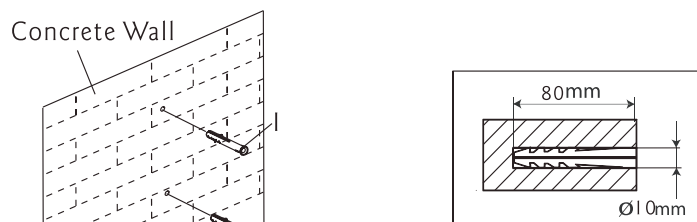


Fig. 2d

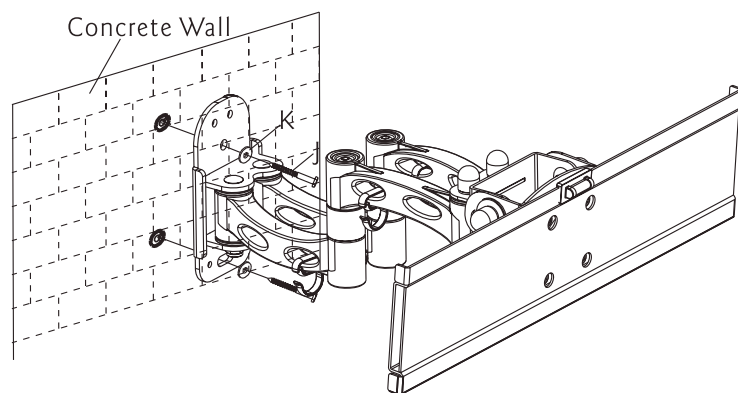


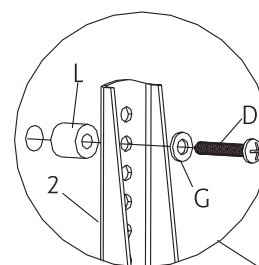
Fig. 2e

2. Some displays have curved backs with recessed mounting lands(Fig.a). It will require the use of spacer. For this display, install a 9/16" spacer(L) between display and the bracket. As shown in Fig 1b.

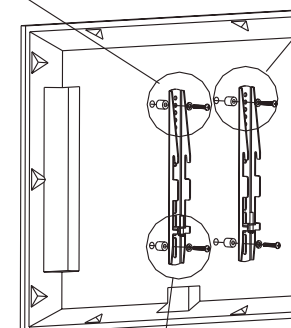
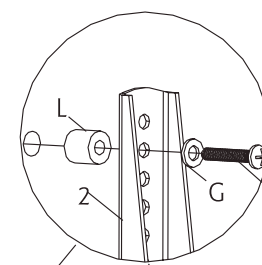


Fig a

M4 Fig bit



M5 Fig bit



M6 Fig bit

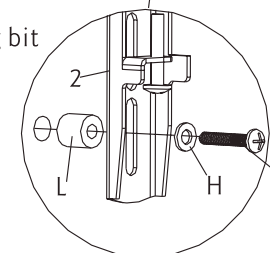


Fig 1b

Step 2: Attach mount to wall

First, determine the height of stand

The best height of stand is parallel to eyelevel of a person who sitting on a couch.

Normally, the horizontal distance of eyelevel is about 4' from ground level.

The following two conditions are for determining the perfect height of stand:

- 1) the distance between wall and couch (Fig 2a).
- 2) the distance of eyelevel from ground level plus the distance measured from eyelevel of a person sitting on couch with viewing angle of 15° (Fig 2a).

For example:

- 1) the distance of 'a' is 5'-7', the distance of 'b' is about 1'
- 2) the distance of 'a' is 8'-13', the distance of 'b' is about 3'
- 3) the distance of 'a' is 14'-17', the distance of 'b' is about 4'

The perfect height of stand centre will be anywhere within b, where you feel comfortable for viewing.

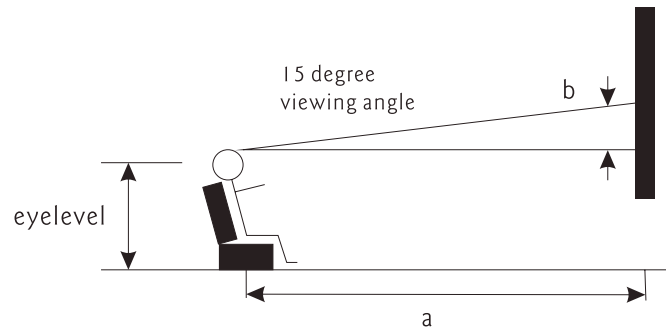


Fig 2a

After determining the height of stand, follow the installation instructions in below to install wall mount to different kinds of wall - wooden, brick, concrete and stone.

Wooden wall:

Using a awl or nail to make where the nails are located, as shown as Fig.2b. Pre-drill these holes with a 5mm drill bit to at least 80mm in deep hole. Use wall mount as a template to mark the location of other hole and drill the same holes. Please make sure these holes are level and eudipleural. Fix the wall mount to the wall with 2 long bolts (J) and washers(K) (Fig.2c).

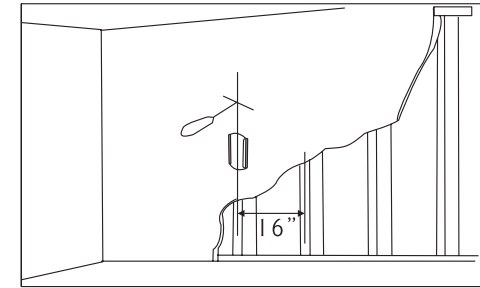


Fig. 2b

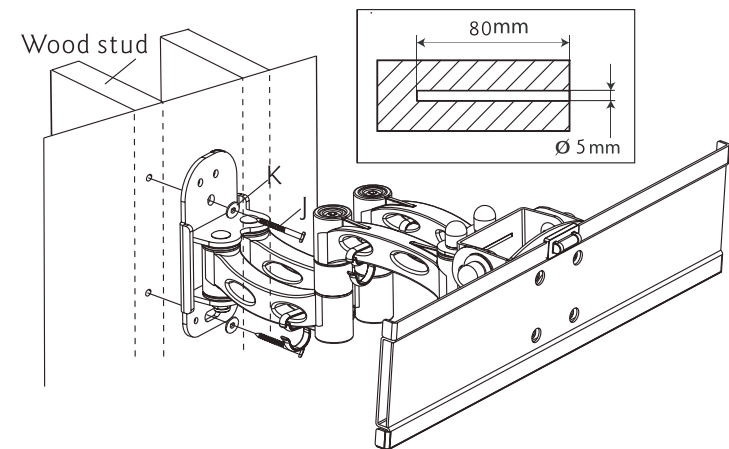


Fig. 2c