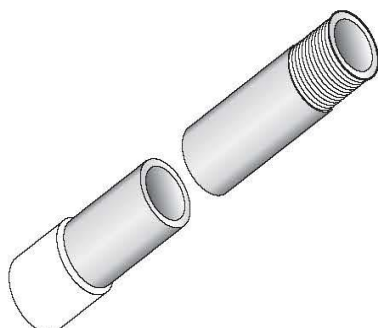


# Wanco Conduits



**Wanco** Conduits are manufactured using the highest grade of steel to ensure solid mechanical strength. They are continuously welded to ensure smooth internal surfaces which is highly essential for wire pulling. Hot Dipped Galvanised after fabrication and threading in compliance to the BS specifications.

**Wanco** Conduits are manufactured in accordance to the following British Standards listed below.

Conduits with either Epoxy Powder coating or enamel painted coating are available upon request.

## Special Features of Wanco Conduits

- Highest grade of steel for best mechanical strength
- Threading in compliance to BS Specifications
- Supplied with one socket end and plastic capping on other end
- Smooth internal beads for easy wire pulling and resistance to snagging

## Available Options

- Self colour finish
- Non-standard lengths
- Unscrewed
- Screwed without sockets
- Medium Gauge
- Packing for Export

## Wanco Rigid Steel conduit - BS 4568 : Part1 : 1970 (Class 4); IEC 60614-1-2

Hot Dipped Galvanised Inside and Outside

- Heavy Gauge metric sizes
- Heavy protection both inside and outside
- Threaded both ends, with one end fitted with coupling and other with plastic cap
- Standard Length: 3.75 metres

Diameter (mm)		Wall Thickness (mm)	Weight (Kg)	Pitch (mm)	Length of Threads (mm)	
Inside	Outside				Minimum	Maximum
19.7	20	1.6 ± 0.15	2.90	1.5	15	13
24.6	25	1.6 ± 0.15	3.80	1.5	18	16
31.6	32	1.6 ± 0.15	5.50	1.5	20	18

## Wanco Rigid Steel conduit - BS 4568 : Part1 : 1970 (Class 3)

- Heavy Gauge metric sizes
- Heavy protection both inside and outside
- Threaded both ends, with one end fitted with coupling and other with plastic cap
- Standard Length: 3.75 metres

Diameter (mm)		Wall Thickness (mm)	Weight (Kg)	Pitch (mm)	Length of Threads (mm)	
Inside	Outside				Minimum	Maximum
19.7	20	1.6 ± 0.15	2.90	1.5	15	13
24.6	25	1.6 ± 0.15	3.80	1.5	18	16
31.6	32	1.6 ± 0.15	5.50	1.5	20	18

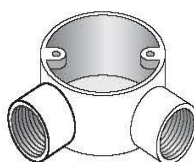
## Wanco Rigid Steel conduit - BS 31 : 1940 (Class 3)

- Heavy Gauge imperial sizes
- Heavy protection outside and medium protection inside
- Threaded both ends with one coupler

Diameter (mm)		Wall Thickness (mm)	Weight (Kg)	Pitch (mm)	Length of Threads (mm)	
Inside	Outside				Minimum	Maximum
18.8	19.1	1.6 ± 0.15	2.90	1.5	15	13
25.1	25.4	1.6 ± 0.15	3.80	1.5	18	16
31.5	31.8	1.6 ± 0.15	5.50	1.5	20	18

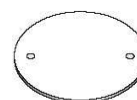
## Circular Junction Boxes

2-Way Angle Box



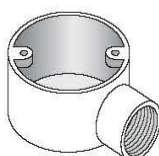
Sizes: 20mm, 25mm, 32mm  
 $\frac{3}{4}$ ", 1", 1  $\frac{1}{4}$ "

Box Lid



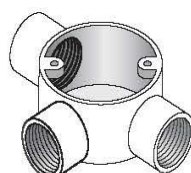
Sizes: 65mm, 86mm

1-Way Terminal Box



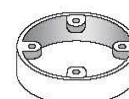
Sizes: 20mm, 25mm, 32mm  
 $\frac{3}{4}$ ", 1", 1  $\frac{1}{4}$ "

3-Way Tee Box



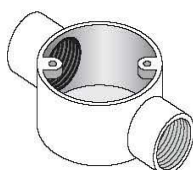
Sizes: 20mm, 25mm, 32mm  
 $\frac{3}{4}$ ", 1", 1  $\frac{1}{4}$ "

Extension Ring



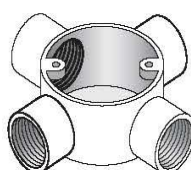
Sizes: 20mm, 25mm, 32mm  
 $\frac{3}{4}$ ", 1", 1  $\frac{1}{4}$ "

2-Way Terminal Box



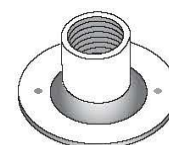
Sizes: 20mm, 25mm, 32mm  
 $\frac{3}{4}$ ", 1", 1  $\frac{1}{4}$ "

4-Way Intersection Box



Sizes: 20mm, 25mm, 32mm  
 $\frac{3}{4}$ ", 1", 1  $\frac{1}{4}$ "

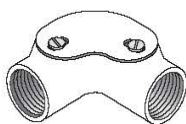
Dome Cover



Sizes: 20mm, 25mm, 32mm  
 $\frac{3}{4}$ ", 1", 1  $\frac{1}{4}$ "

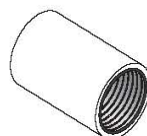
## Conduit Accessories

Inspection Elbow



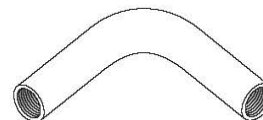
Sizes: 20mm, 25mm, 32mm  
 $\frac{3}{4}$ ", 1", 1  $\frac{1}{4}$ "

Socket Coupling



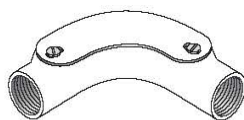
Sizes: 20mm, 25mm, 32mm  
 $\frac{3}{4}$ ", 1", 1  $\frac{1}{4}$ "

Long Bend (Solid)



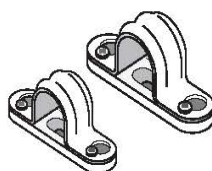
Sizes: 20mm, 25mm, 32mm  
 $\frac{3}{4}$ ", 1", 1  $\frac{1}{4}$ "

Inspection Bend



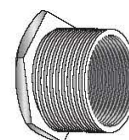
Sizes: 20mm, 25mm, 32mm  
 $\frac{3}{4}$ ", 1", 1  $\frac{1}{4}$ "

Spacer Bar Saddle



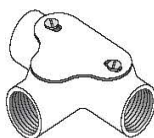
Sizes: 20mm, 25mm, 32mm  
 $\frac{3}{4}$ ", 1", 1  $\frac{1}{4}$ "

Reducer



Sizes: 25mm x 20mm  
 32mm x 25mm

Inspection Tee



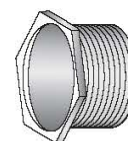
Sizes: 20mm, 25mm, 32mm  
 $\frac{3}{4}$ ", 1", 1  $\frac{1}{4}$ "

Half Saddle



Sizes: 20mm, 25mm, 32mm  
 $\frac{3}{4}$ ", 1", 1  $\frac{1}{4}$ "

Brass Male Bush



Sizes: 20mm, 25mm, 32mm  
 $\frac{3}{4}$ ", 1", 1  $\frac{1}{4}$ "

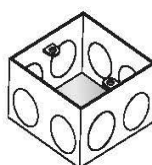
# Conduit Accessories

Stop Plug (Hex.)



Sizes: 20mm, 25mm, 32mm  
3/4", 1", 1 1/4"

1 Gang K.O. Box



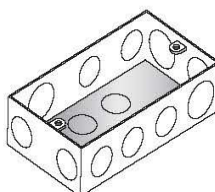
Sizes: 75 x 75 x 35mm

Nipples



Sizes: 25mm x 20mm  
32mm x 25mm

2 Gang K.O. Box



Sizes: 135 x 75 x 35mm

Brass Adaptor c/w Locknut



Sizes: 12mm x 20mm  
16mm x 20mm  
20mm x 25mm  
20mm x 20mm  
25mm x 25mm  
32mm x 32mm  
38mm x 38mm  
50mm x 50mm

Adaptor c/w Locknut



Sizes: 12mm x 20mm  
16mm x 20mm  
20mm x 25mm  
20mm x 20mm  
25mm x 25mm  
32mm x 32mm  
38mm x 38mm  
50mm x 50mm